

ACCESS STATEMENT

This access statement does not contain personal opinions as to our suitability for those with access needs, but aims to accurately describe the facilities and services that we offer all our guests/visitors

Access Statement for Leonardo Royal Waterfront Brighton



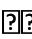
Introduction

Phone, fax & email:

Phone: 01273 206 700 / 0871 376 9041 / +44 845 305 8309 Fax: 0871 376 9141 / +44 845 305 8348

E-mail: from the Contact us page on the hotel website

Alternative format information (available at the hotel)

o Large print 

Website accessibility (eg: font can be enlarged)

ACCESS STATEMENT

2 - An Access Statement is available on-line.

Information about accessible public transport:

Accessibility of London and UK railway stations can be found at the following link: www.nationalrail.co.uk/passenger_services/disabled_passengers/. An example can be seen for Brighton Station:

www.nationalrail.co.uk/stations/sjp/BTN/stationAccessibility.xhtml

Brighton has a number of wheelchair accessible taxis operated by Brighton & Hove Streamline Taxis Ltd. More information is available at: www.brighton-streamline.co.uk/taxi-home.html

There is no courtesy vehicle at this hotel.

There is a changing room facility 10 minutes from the hotel and 5 minutes by taxi.

VisitBrighton has a useful website listing all things accessible in the area, for example transport; public facilities; attractions; wheelchair and scooter hire: <http://www.visitbrighton.com/plan-your-visit/accessibility>.

This hotel took part in Visit Britain Disability Access Campaign 2013 as well as the Visit England Disability Campaign in 2015 and is now fully accredited.

ACCESS STATEMENT



Shopmobility is a scheme whereby users can hire a wheelchair or scooter to enable them to shop in comfort. Details of how this scheme operates in Brighton are available at: <http://www.visitbrighton.com/plan-your-visit/accessibility/shopmobility>

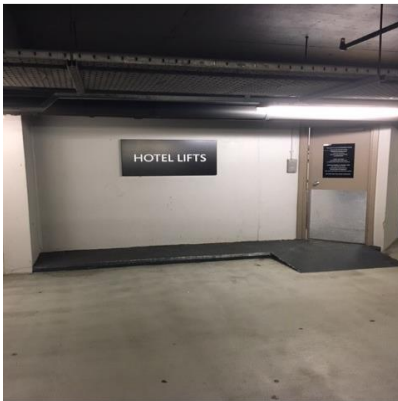
There are 210 bedrooms at this hotel; one on the 1st floor is designated for disabled guests. There are also several rooms with some adaptations. Details of the accessible room are provided further on.

Advice about evacuation should you need assistance (in the unlikely event of an emergency) should be discussed directly with the hotel. An evacuation chair with a safe working load (SWL) of 150kg is available beside the designated accessible bedroom.

At present access to the Health and Leisure Club is only possible by wheelchair via the Ballroom, a platform lift, and via a route back of house and in through the emergency exit into the gym. Assistance is likely to be required to do this.

Arrival, Car Parking & Entrances

ACCESS STATEMENT



- There is a multi storey car park beneath the hotel operated by Brighton & Hove City Council. The hotel has been allocated up to 62 spaces for guests.
- The Lanes Car Park has at least 9 x bays designated for Blue Badge holders on Level 1 of the car park. The price is the same then for any other spaces.
- Access to the hotel is by lift from Level 2 or Level 4. **Currently there are no designated accessible parking spaces on these levels, and car park users would have to use the car ramp from Level 1 to Level 2 to reach the lift. Assistance is likely to be required by some users.**
- All guests including Blue Badge holders must pay to park in this car park.

NB. There is a height restriction of 6' 3" (or 1.9m) in this car park.

It is possible to find out about designated on-street accessible parking spaces in the area by visiting: <http://www.brighton-hove.gov.uk/content/parking-and-travel/parking/disabled-bays>

ACCESS STATEMENT

From the car park, there is a ramp of 1:12 which is 750mm long x 750mm wide (Level 2 pictured), leading to the lift lobby door which is 750mm clear opening. The call point 1240mm high. **Assistance may be required by some to gain access to the lift lobby.**

A similar ramp is provided to the lift at Level 4, although this is slightly smaller (700mm long x 700mm wide). **Again, assistance may be required by some to gain access to the lift lobby.**

On the seafront (King's Road), there is a drop-off point outside the doors, about 10m from the entrance. The doors are currently 900mm clear opening each. There is a call point 1210mm high.

There is a side hung automatic door with push pad entry. The door is 1020mm clear opening, and the push pads are 950-1000mm high.

There is a threshold of 25-40mm at the doorways.

- The lift has doors are 1300mm clear opening, with 1800mm clear space opposite the doors, and clear floorspace of 1750mm x 2000mm in the lift.

- Lift controls are up to 1170mm high.

From the King's Road entrance there is either lift access (see size of lift from the car park), or a flight of stairs 8 + 8 steps with a landing in between and handrails to both sides.

- From the pedestrian entrance on Bartholomew Square at the rear of the hotel, there is either a stepped or ramped approach.

ACCESS STATEMENT

The 2 ramps are 6.5m long with a gradient of 1:12, and 940mm wide at the narrowest point. There are currently no handrails on the ramps.



- Alternatively there are 3 + 4 steps – each 130-150mm high up to the entrance, currently without handrails.
- There is a side hung automatic door with push pad entry. The door is 1020mm clear opening, and the push pads are 950-1000mm high.
- The hotel doors are supervised 24 hours a day.

Reception

ACCESS STATEMENT



- Reception is on the right hand side within the entrance from the car park lift or from the steps up from the King's Road entrance, and on the left hand side if approached from the entrance on Bartholomew Square.
 - The front desk is equipped with an induction loop.
 - There is a large, open space within the lobby in front of the reception desk. The counter is 1180mm high.
 - There is seating available in the area.
 - The desk is also equipped with a lower part measuring 1000mm by 650mm and 800mm high.
 - **On check-in**, disabled guests will be asked to complete a **Personal Evacuation Plan Questionnaire** in consultation with the Guest Relations Manager.
 - All information provided will be treated in the strictest confidence.
 - If you are likely to require assistance in the unlikely event of an evacuation please do notify us on arrival. We would also ask guests with a hearing loss to let us know so that we can provide assistive equipment during your stay
-

ACCESS STATEMENT



Public Areas

A- Lounge and bar areas

The Atrium area

ACCESS STATEMENT

- There are generally wide routes to public areas from reception.
- There is a choice of seating in the area, and some tables have clear space beneath them of 650mm.

Staff will provide assistance to those who need it.

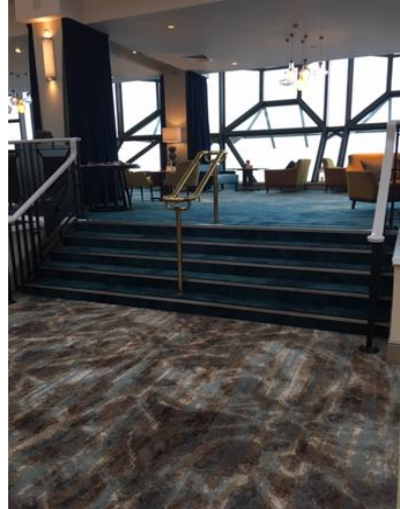


Bar

The bar is equipped with a lower counter measuring 1000mm wide by 1750 mm long and 76 com height.

Seaview Lounge

ACCESS STATEMENT

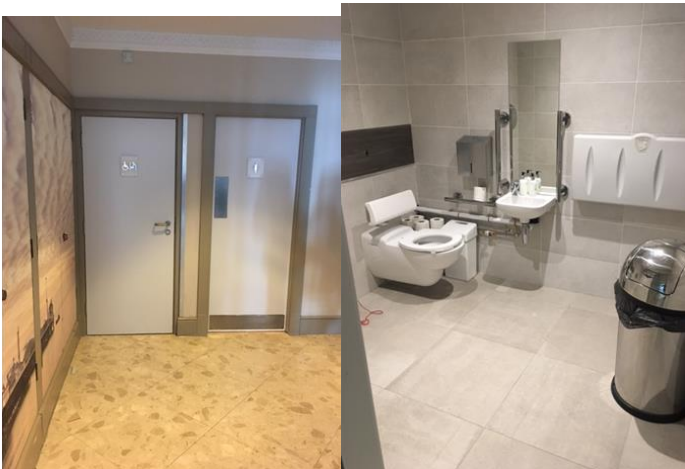


- There is either lift access (see car park lift) or 5 x steps with handrails to both sides. There are 3 x additional steps from the Atrium Bar – again accompanied by handrails.
 - Staff will provide assistance to those who need it.
 - The designated accessible public toilet is situated beside the bedroom lifts, in the corner of the reception area.
 - There is seating without armrests only, and clear space beneath tables of at least 650mm.
-

ACCESS STATEMENT



Public WCs



The accessible public toilet is beside the 2 x bedroom lifts, in the corner of the area beside reception.

- The door to the designated accessible WC is 800mm clear opening.
 - There is clear floorspace in the room of 2320mm x 21500mm minimum.
 - There is a vertical rail beside the hand basin.
-

ACCESS STATEMENT

- There is a fold down rail to one side of the WC and a horizontal rail on the other.
- **There is a strobe light linked to the fire alarm system. There are also standard WCs nearby**

Heath and Leisure Club



Leisure Club Entrance

- At present access to the Health and Leisure Club is only possible by wheelchair via the Ballroom, a platform lift, and a route back of house and in through the emergency exit into the gym. Assistance is likely to be required to do this.
 - Currently there is no wheelchair accessible level access shower or designated accessible WC in the area.
 - There are 7 x steps down from the entrance to the club, with a handrail to the left hand side.
-

ACCESS STATEMENT

- The reception desk is fitted with an induction loop for hearing aid users.
- There are 760mm clear opening doors to the men's and women's changing rooms. There is a 110mm step up into the shower cubicles.
- The door to the swimming pool area is 740mm clear opening.



Welcome desk

- The reception desk is fitted with an induction loop for hearing aid users.



- There are 760mm clear opening doors to the men's and women's changing rooms. There is a 110mm step up into the shower cubicles.
-

ACCESS STATEMENT

- The door to the swimming pool area is 740mm clear opening.
- There are 6 x steps into the swimming pool with a handrail
- There is a shower beside the swimming pool, but there is a 70mm step up to this, and to the Sauna and Steam Room.

Steam room and sauna

- The Steam Room has an 840mm clear opening door and the Sauna has an 820mm clear opening door.



Access to the Club by wheelchair may only be possible via a platform lift in the Ballroom, then via the back-of-house to reach the gym's emergency access doors.

- The platform lift has a door which is 900mm clear opening, and clear floorspace of 1450mm deep x 970mm wide.
 - Assistance is likely to be required to use this facility (especially if there is a function or event in the Renaissance room).
-

ACCESS STATEMENT

Lifts



- There is lift access between the reception area and the 1st floor meeting rooms and bedrooms. The size of the lifts is 1700mm deep x 1850mm wide minimum and servicing four floors.

- The lifts have automatic sliding doors 1200mm clear opening that are fitted with sensors



Inside the guest lift

- Lift controls are a maximum of 1070mm high and have tactile buttons.

ACCESS STATEMENT

- There is a handrail and a mirror at the rear of the lifts.

- There is both visual and audible floor announcement in the lifts.



Conference & Meeting Rooms

ACCESS STATEMENT



- Access to the Ballroom is via a platform lift (or stairs). The platform lift has a door which is 900mm clear opening, and clear floor space of 1450mm deep x 970mm wide.



- The staircase to the Ballroom has 7 x steps accompanied by handrails.

Other meeting rooms are on the 1st floor and can be accessed via the 2 x bedroom lifts. Turn right out of the lifts and then left towards the meeting room areas.

- The nearest designated accessible WC is on the ground floor near the bedroom lifts.

Accessible Bedrooms

ACCESS STATEMENT



- Room 112 (a zip & link twin bedded room) has a door which is 770mm clear opening, with a minimum of 1500mm clear space opposite the door.

- Door handles and keyways are between 1020 – 1180mm high.
There are door viewers for use at both a seated and standing height.

- The door between the lounge area and the bedroom is 870mm clear opening. The lounge also has a double sofa bed.



- There is a lowered hanging rail point in the wardrobe.

ACCESS STATEMENT

- There is clear floorspace in the lounge and bedroom of at least 1500 x 1500mm, with clear space of up to 900mm beside the beds.
- The beds are 540mm high to the top of the mattress.

A mini bar could be used to store medication.



- Assistance may be required by some guests to open and close the curtains.
- There is clear space under the desk of 700mm.

Assistive Equipment:

ACCESS STATEMENT

- Emergency button beside the bed.
- A Big Button telephone is available.
- There is a strobe light linked to the fire alarm in the bedroom and lounge.
- There are 4 x text channels on TV.

Please also see sensory equipment below.

Ensuite shower, bathroom & WC



- Shower and bathroom: The door to the room is 870mm clear opening outwards into the bedroom, with 2000mm clear space opposite the door.
 - There is a door bar to aid closure from inside the room.

 - There is clear floor space of 2 x 1500x1500mm within this room.
-

ACCESS STATEMENT



- The basin has a lever operated tap.
- There is space beneath the basin of up to 650mm. There is currently no vertical rail beside the hand basin.



- There is lateral (sideways) transfer to the WC of 1100mm to the right. There is a fold down rail on one side and a horizontal rail on the other.
 - The WC is 480mm high.
 - There is an emergency cord linked to reception, and a strobe light linked to the fire alarm system.
 - There is a level access shower, with lateral (sideways) transfer of up to 850mm to the right.
-

ACCESS STATEMENT

- The shower seat is adjustable in height, and has a seat size of 400x400mm, which is fitted with integral fold down handrails.
The shower controls are 1200mm high
- As well as a fold down seat, a wheel-in shower seat with fixed armrests and small wheels is available. This is 540mm high, with seat size of 400x400mm.
- There is also a corner bath in the room without handrails. The bath rim is 510mm high.

Bedrooms

- There are 210 bedrooms at this hotel; room 112 (the Sussex Suite) on the 1st floor is designated for disabled guests. An evacuation chair with a safe working load (SWL) of 150kg is available beside the designated accessible bedroom.

Advice about evacuation should you need assistance (in the unlikely event of an emergency) should be discussed directly with the hotel.

- Rooms 223; 323 and 423 have a rail above the bath and one beside the WC.

Rooms 401 and 403 have a strobe light linked to the fire alarm system. There are also emergency call buttons beside the beds

Sensory Equipment

- Guests can be offered the following assistive devices (illustrated):
Large print



Portable hand rails are available on request

ACCESS STATEMENT

Additional Information

Your health, comfort and safety are of the utmost importance to us, therefore hotel staff have received disability awareness training. Please do contact our Guest Relations Manager if there is something that needs our attention. We will endeavour to ensure that your individual needs are met wherever reasonably possible.

However, as with all hotels, some services and equipment are subject to operational constraints (eg: lifts and other access equipment requiring service at short notice).

Disclaimer

The information in this Access Statement was produced by Tourism for All Services Limited on behalf of Thistle Hotels.

Whilst every effort has been made to ensure the accuracy of this Access Statement, neither Thistle Hotels nor Tourism for All Services Limited accept any liability and responsibility for any amount or kind of loss or damage that may result to you or a third party (including without limitation, any direct, indirect, punitive or consequential loss or damages, or any loss of income, profits, goodwill, data, contracts, use of money, or loss or damages arising from or connected in any way to business interruption, and whether in tort (including without limitation negligence, contract or otherwise) in connection with the information contained herein, save that nothing in this disclaimer shall exclude either party's liability for death or personal injury as a result of its negligence or for any damage incurred as a result of fraud or fraudulent misrepresentation.
