

LEONARDO

Hotel

Brighton

ACCESS STATEMENT 2024

This access statement does not contain personal opinions as to our suitability for those with access needs, but aims to accurately describe the facilities and services that we offer all our guests/visitors

Access Statement for Leonardo Hotel Brighton

Introduction

We are a city centre hotel located on 101 Stroudley Road, Brighton BN1 4DJ and are approximately a 5 minute walk to the city centre. We are about 5 minutes' walk from Brighton railway station, located in front of the station parking. There is a flat walk from the ticket gates to the hotel, following the signs to taxi rank. We have 234 bedrooms over 5 floors. Our meeting rooms are located on the ground floor & lower ground floor. The ground floor has no bedrooms on it, but every floor is accessible by lift. On every floor, there are fully accessible rooms suitable for people with all kinds of access needs.

We look forward to welcoming you. If you have any queries or require any assistance please phone +44 (0) 1273 862 121 or email brighton@leonardohotels.com



ACCESS STATEMENT 2024

Pre-Arrival

The nearest railway station is Brighton Station and is located approximately a 5 min walk away, access is possible by wheelchair as there is a level walkway.

Our preferred taxi company is Southern Taxies Group and on request, they will send a taxi that is wheelchair accessible. They can be booked via our front office team or alternatively can be contacted via 01273 555 555 or via [E-Booking \(autocab.net\)](https://www.autocab.net)

All Brighton & Hove buses are equipped with accessible access for all travellers. Wheelchair users and some class 2 scooters are welcome on board the Brighton buses.

It is advised to contact their advice line for further guidelines: [Accessibility - Brighton & Hove Buses](#)

The nearest bus stops are at the Brighton station and our reception staff is available 24 hours to advice on the correct buses to get you to your destination.

Car Parking and Arrival

Hotel does not have their own car park and guests can use the Brighton Station car park which is across the road, partially covered with 633 bays. There are electrical charging points (12 on upper level) and accessible bays (on ground level). The car park has a lift in operation as well.

The car park is well lit, CCTV covered and has patrol officers. The road outside the hotel is restricted use. Car park is across the hotel entrance and can be reached with a step free route. [Parking in Brighton Station Parking | Prebook Parking | APCOA | APCOA](#)

When entering the building there are automatic sliding doors. There are no steps to the main entrance.

If a guest is not able to take their own luggage to the bedroom - we will take it for them.

The opening width of our automatic doors is 2 meters

ACCESS STATEMENT 2024

Main Entrance / Reception / Welcome Area

The reception is located immediately inside the front doors on the ground floor with no steps. There are three lifts available to all floors from the reception. Braille is available beneath the floor option buttons within the lift. The room key is required to call the lift from the ground floor for additional security. The ground floor is level throughout. Pushchairs and wheelchairs can be manoeuvred easily around reception, lobby and bar area, and there are chairs and sofas available in reception.



The flooring in the lobby and ground floor is vinyl flooring.

All areas in reception and the lobby are well lit with LED lights in the ceilings and on the walls.

Staff can check in at the main reception desk, but we have a lower check inn area as well next to the reception along with a hearing loop.

We frequently accommodate show rounds of the property - we advise to pre-book with our Hotel Manager

ACCESS STATEMENT 2024

Bedrooms

We do not have ground floor bedrooms, but every floor is accessible by lift.

On every floor, there are accessible bedroom (full accessible & part accessible). All of the beds are double and have low bedside units and coffee stations and there are lower rails in the wardrobes. There is a lower peephole for secure access as well as an iron and board. The doors are 920mm wide. Windows open partially and there is air-conditioning in every room.

Bedroom doors are marked with the door number on the front - these are not raised in Braille format.

The furniture is fitted (desk, cupboards, wardrobe) but the chair and table can be removed if requested.

The beds in our accessible rooms are doubles. Relatives or carers can stay next door with an interconnecting room available.

The space next to the bed for wheelchair users to transfer onto the bed is 70.5" (178cm).

The height of the beds to the top of the mattress is 26" (66cm). The bed base has secure wheels which can be moved to suite the guest needs.

The bedroom is lit with LED ceiling lights, 2 bedside lights and additional lighting can be requested but is not guaranteed.

The walls and doors are of a grey colour, with one wall in the bedroom a dark blue colour and the carpets are different shades of blue and cream. There are carpets in the bedroom throughout.

All our bedding and pillows are non-feather.

All our accessible bedrooms have telephones. The phones have a flashing light indicator enabling the call to be seen and heard. We also have vibrating pillow (available on

ACCESS STATEMENT 2024

request on a first come basis), pull cords and flashing light when the fire alarm sounds. We do not have hoists available.

Instructions on how to activate subtitles on the TV can be obtained from reception.

Bathrooms, Shower-rooms and Toilets

A fully accessible room has no bath in the bathroom but there is a wet room shower, with a seat attached to the wall.

All bathrooms are equipped with grab rails and there is flat access from the bedrooms to the en-suite.



The clear door opening width of the bathroom door is 920mm.

The WC & Basin are located at a lower height for easy access. 27.5" is the height of the sink and 19" is the WC height. Support/grab rails are located next to the toilet and shower seat.

The shower dials are on a turn mechanism only.

The bathrooms are well lit with ceiling lights and LED lights in the mirrors, which are fully encased. The towels are white.

ACCESS STATEMENT 2024

There is red emergency pull cords located in the bedroom and bathroom.

Public Areas - Halls, Stairs, Landings, Corridors

The corridors are well lit with wall lights and spotlights in the ceiling; the corridor width is 57".

The flooring on all corridors is carpeted.

We have three lifts from reception to all floors - these all come with audible announcements.

We may not be aware of your requirements so please request that the Duty Manager / reception team on arrival carry out a Personal Emergency Evacuation Plan (PEEP's). If you have specific requirements about evacuating during an emergency evacuation, please make this known to reception when we complete the PEEPs form on arrival. Should the fire alarm sound during your stay you will need to evacuate the building by using the nearest emergency exit stairwell nearest to your bedroom. The meeting point is Broad Plain (through the arch).

We have 2 evac chairs for use in an emergency. Every floor has marked fire exits with refuge area in landings equipped with alarms linked to reception.



ACCESS STATEMENT 2024

Public Areas - Lounges, Lobbies

Our lobby/lounge area is located immediately inside the front door with level entry. These are accessed through the main doors, which have a clear opening width of 2mts.

These areas are level throughout with access space between furniture, with a combination of high and low tables, couch and bucket chairs.

These areas are all well-lit with ceiling lights, wall lights and floor lamps.

The flooring is a mixture of laminate and carpeted area.

There are TV's near Reception and the bar area.

Food and drink can be consumed in these areas if requested.

The nearest WC's and accessible WC is located behind the restaurant with all level flooring throughout.



ACCESS STATEMENT 2024

Restaurant/Dining Room, Bar & Bar area

The bar and restaurant are located on the ground floor and are accessible through a lift from reception.

There is space for wheelchairs and pushchairs and furniture can be moved if necessary.

The lights in the bar and restaurant are dimmed in the evenings but remain on during the day, and the flooring is laminated with a small, carpeted area in the bar

We try to accommodate any dietary requests and ask that we be informed in advance. Our menu's contain calorific information and indicate if Gluten Free. Non-dairy milk is available as standard.

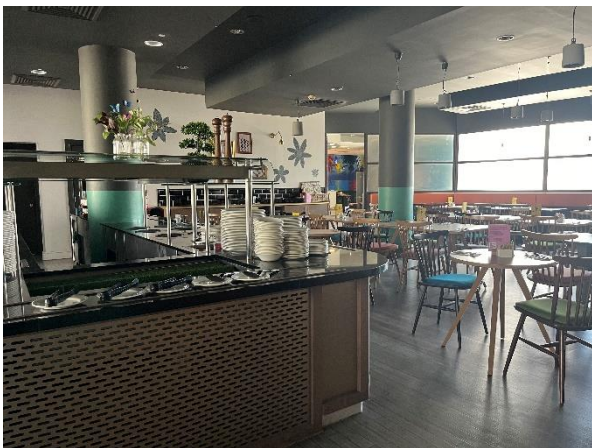
We will happily provide room service where necessary.

Both bar and restaurant food will be brought to you when ready, breakfast is a self-service buffet. Assistance is available if necessary.

Staff can read out the menu if required.

All of our crockery is white with some boards and slated used, cutlery silver and the tables do not have cloths on them.

The nearest WC's and accessible WC are located on the same level just past the restaurant



ACCESS STATEMENT 2024

Public Toilets

There is clear space for a wheelchair (when facing the WC) to the left-hand side.

The height of the WC from floor to seat is 19" (48cm).

There is a grab rail (when facing the WC) to the left of the toilet.

If guests need assistance, there is a red emergency pull cord in the toilet, which is linked to our reception desk.

Our taps in our accessible public toilets are marked with tactile mark to distinguish hot and cold.



ACCESS STATEMENT 2024

Conference Rooms

We have 9 meeting rooms in total, 4 on ground floor and 5 on the lower ground floor.

The clear door opening width to the meeting rooms is 91cm. The lower ground floor is accessible by the lift and has an accessible WC in the lift landing.

All meeting rooms are carpeted and the breakout area on the lower ground floor is carpeted.

All areas are well lit with spotlights and wall lights. There is plenty day light in the meeting rooms.

Furniture can be moved in the suites and the lobby areas upon request.

The contact for conference/meeting hire is:

Meeting & Events Co-ordinator

Tel: +44 01273 862 121 option 3

Email: brightonconference@leonardohotels.com



LEONARDO

Hotel

Brighton

ACCESS STATEMENT 2024

Additional Information

LED lighting is used throughout the entire building.

The local hospital is -

Royal Sussex County Hospital

Eastern Road, Brighton BN2 5BE

01273 696 955

There is complimentary WIFI throughout the hotel.

Address: **Leonardo Hotel Brighton**

101 Stroudley Road,

Brighton,

BN1 4DJ

Telephone: +44 (0) 1273 862 121

Email: brighton@leonardohotels.com

Website: [Brighton Hotels | Brighton City Centre Hotels | Leonardo Hotels](#)
